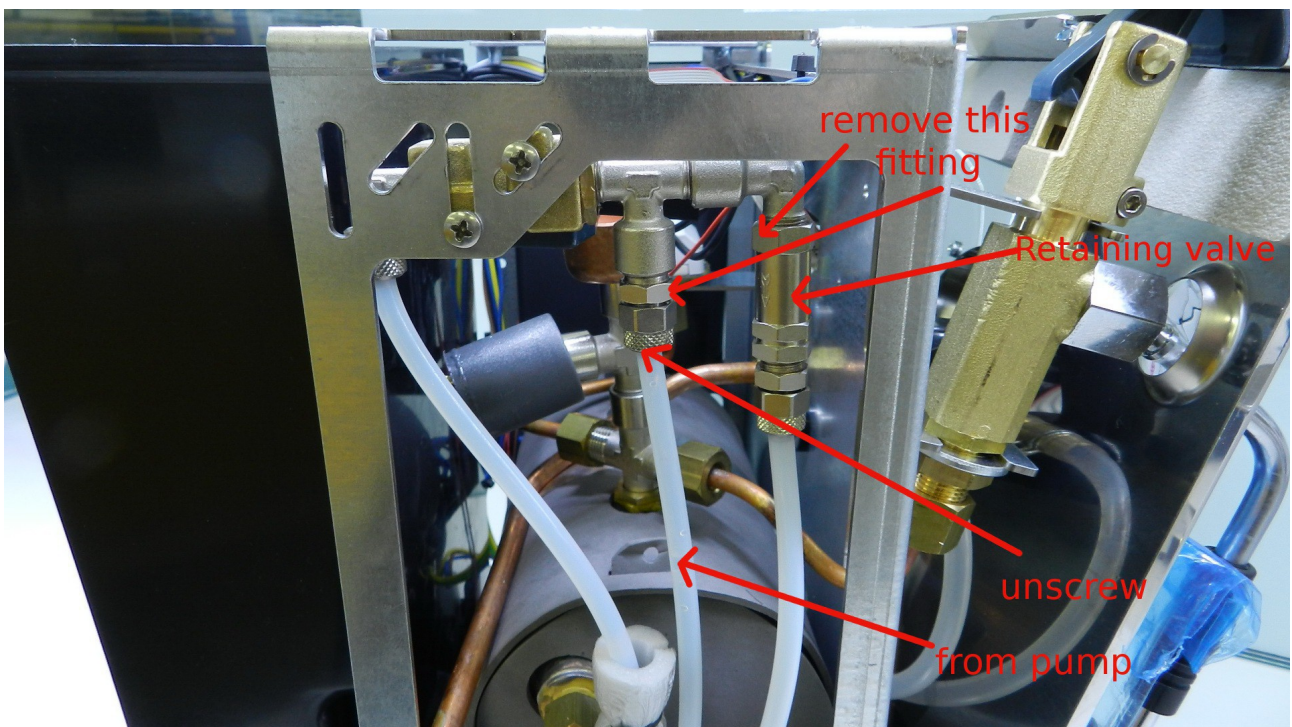


OPV installation on Nuova Simonelli Oscar II

Required materials: OPV valve, silicone tube, fitting L, hose clamps, plastic fitting T, manometer to read pressure

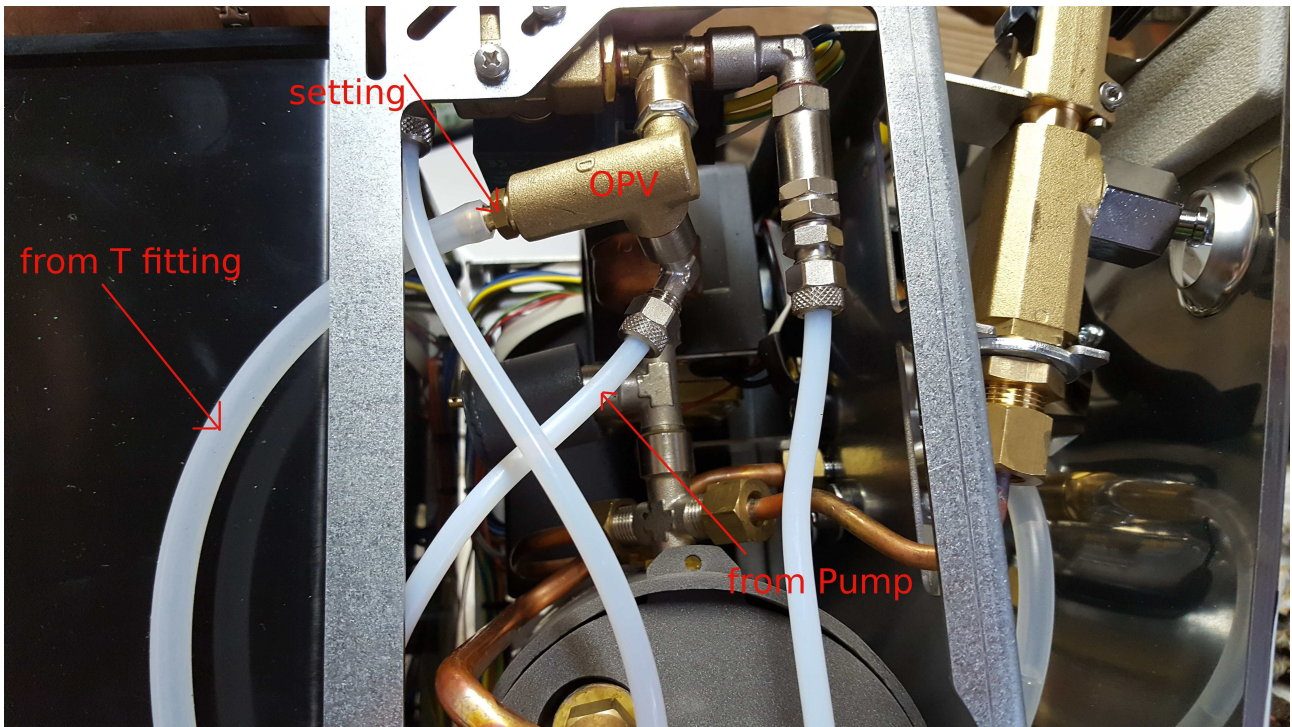


After opening the top and the two side panels on one side you will find what shown on the following picture

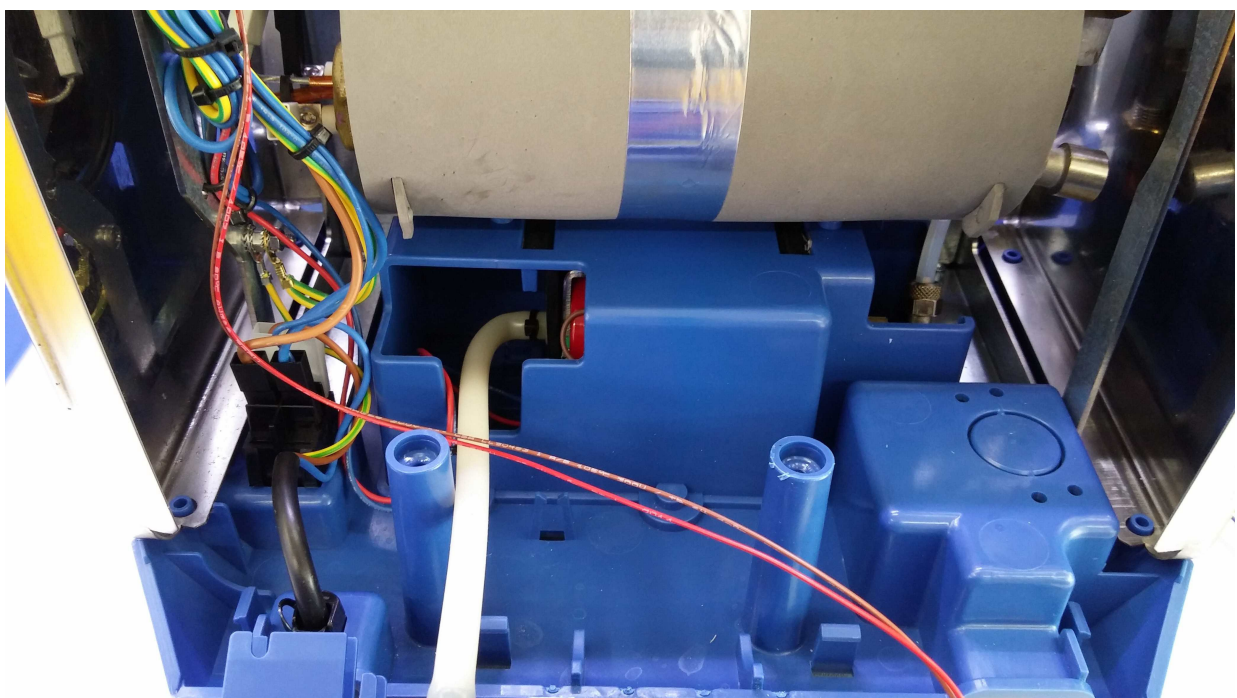


First you must unscrew the nut of the fitting of the retaining valve, then unscrew the fitting which connects the T-fitting of the 2-ways solenoid valve and the teflon tube that comes from the pump.

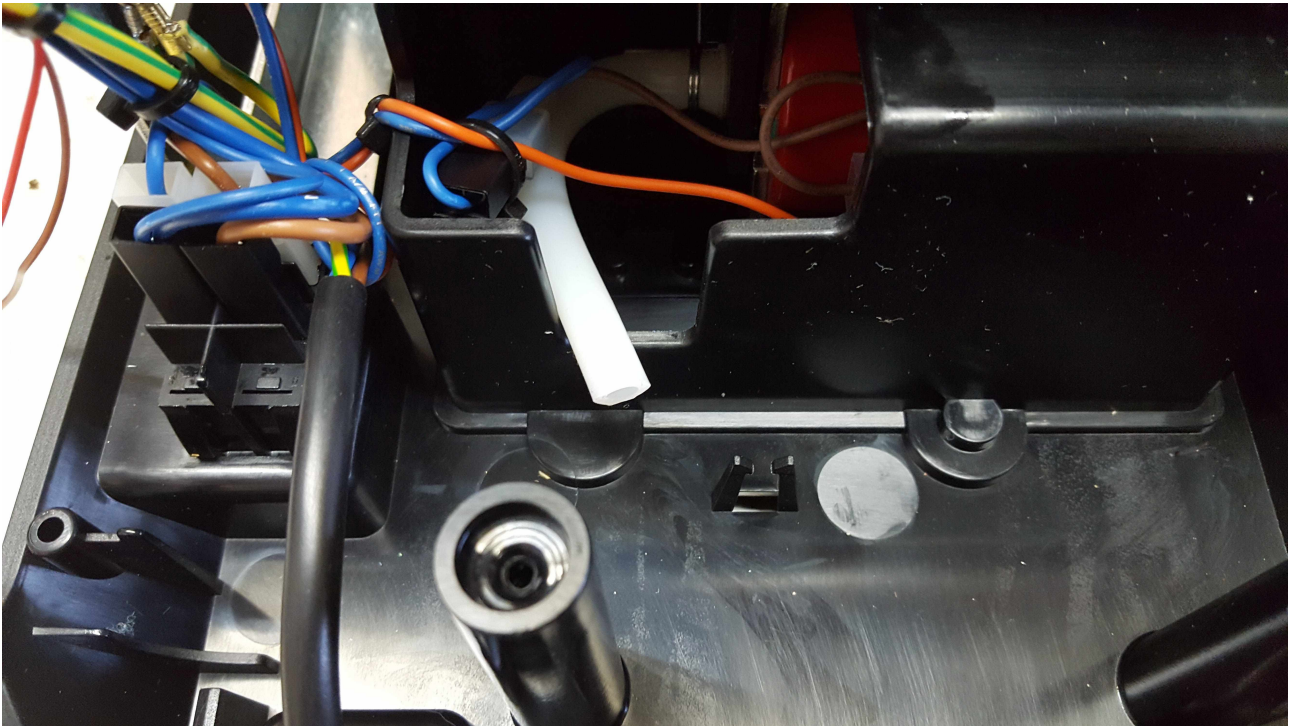
Now screw the OPV valve as shown in the picture taking care to leave the valve parallel to the 2-ways solenoid valve, connect the tube coming from the pump, screw the fitting of the retaining valve, connect the silicone tube.



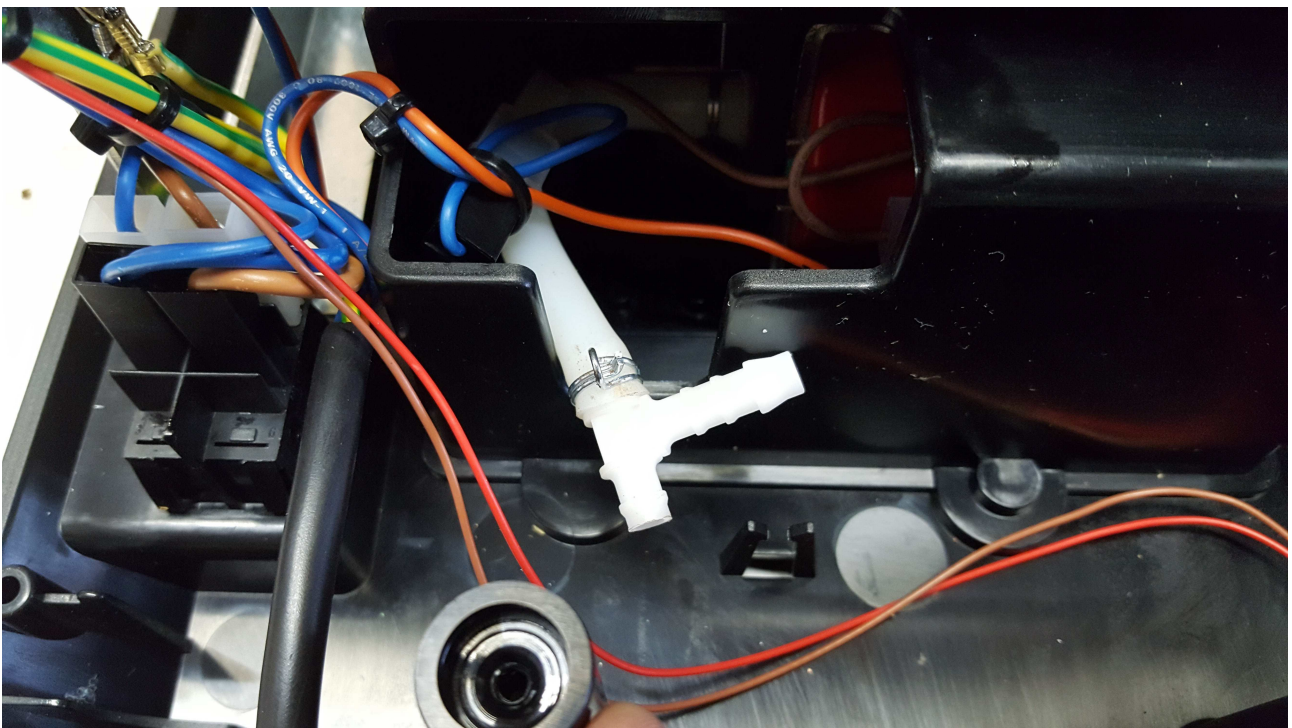
Now you have to open the back where the water tank is placed, once the two screws are unscrewed and you have opened the back we will see this



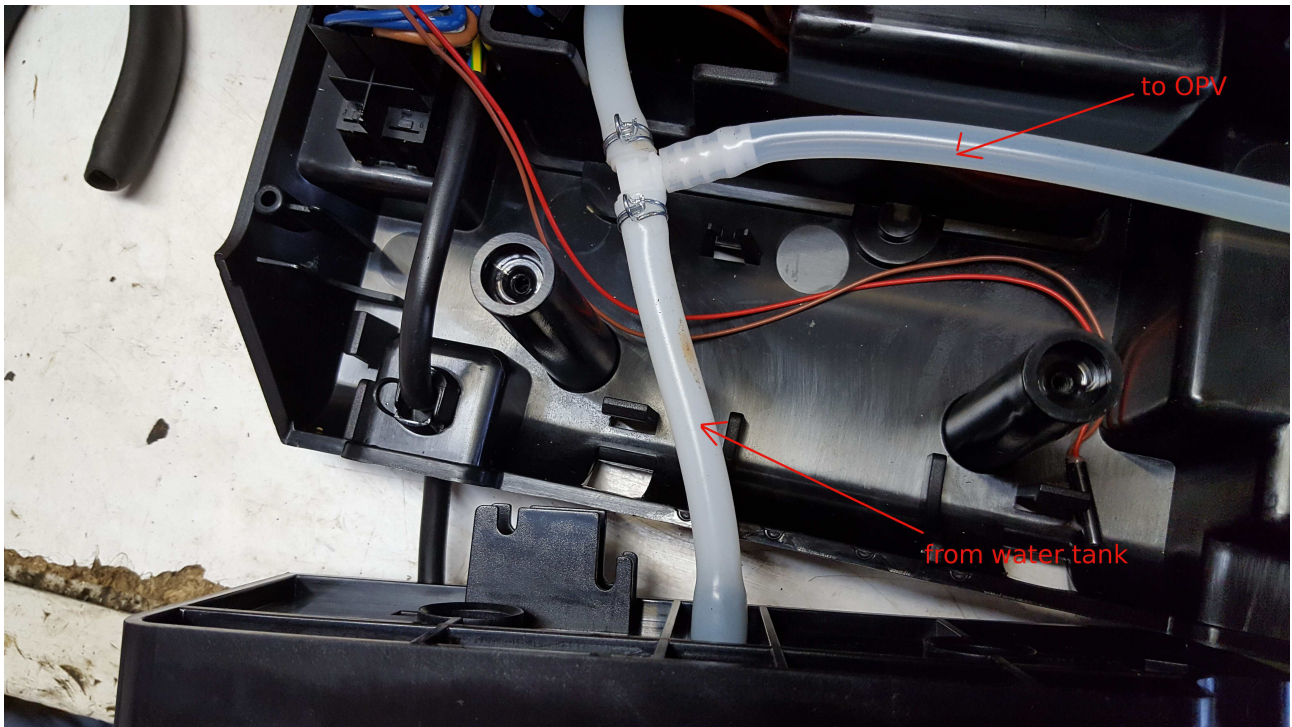
Now you have to cut the silicone tube between the pump and the water tank taking care to leave it as shown in the picture and especially not to make a fold in the silicone tube, the curvature of the tube should be wide



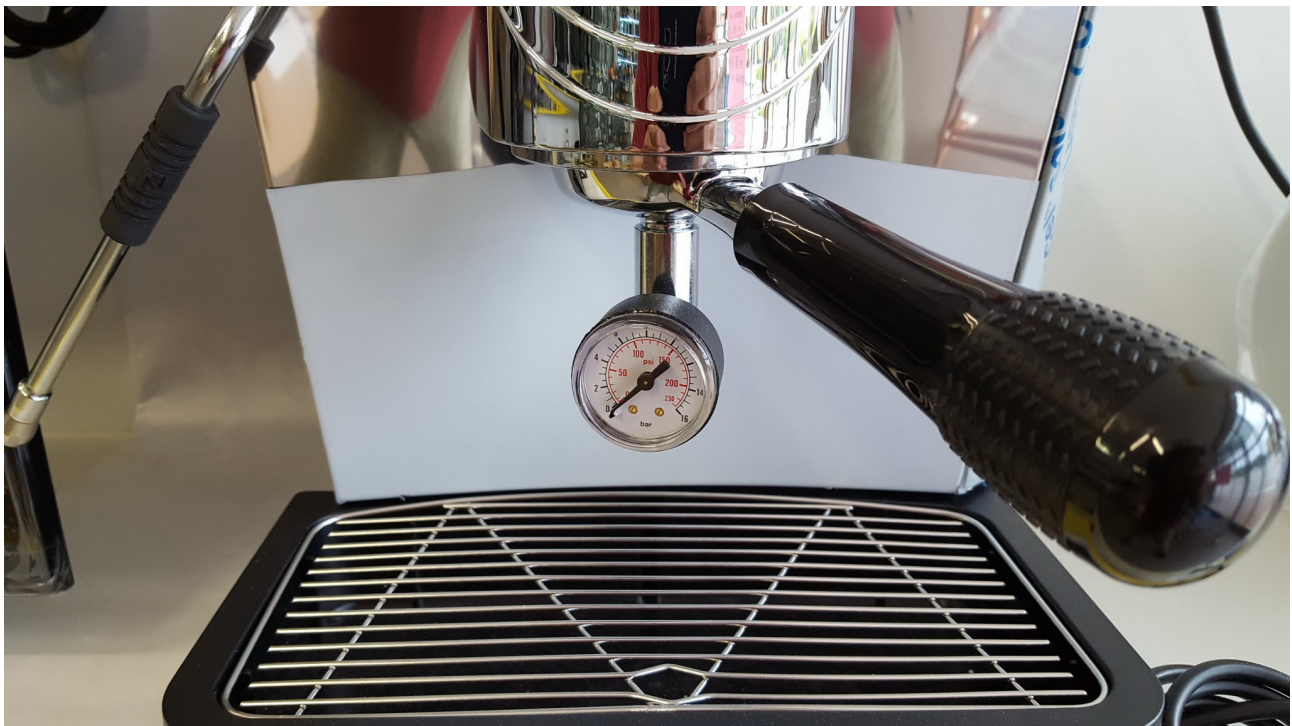
At this point you have to enter the plastic fitting T



and afterwards connect the tube coming from the water tank and the tube coming from the OPV valve as shown in the picture



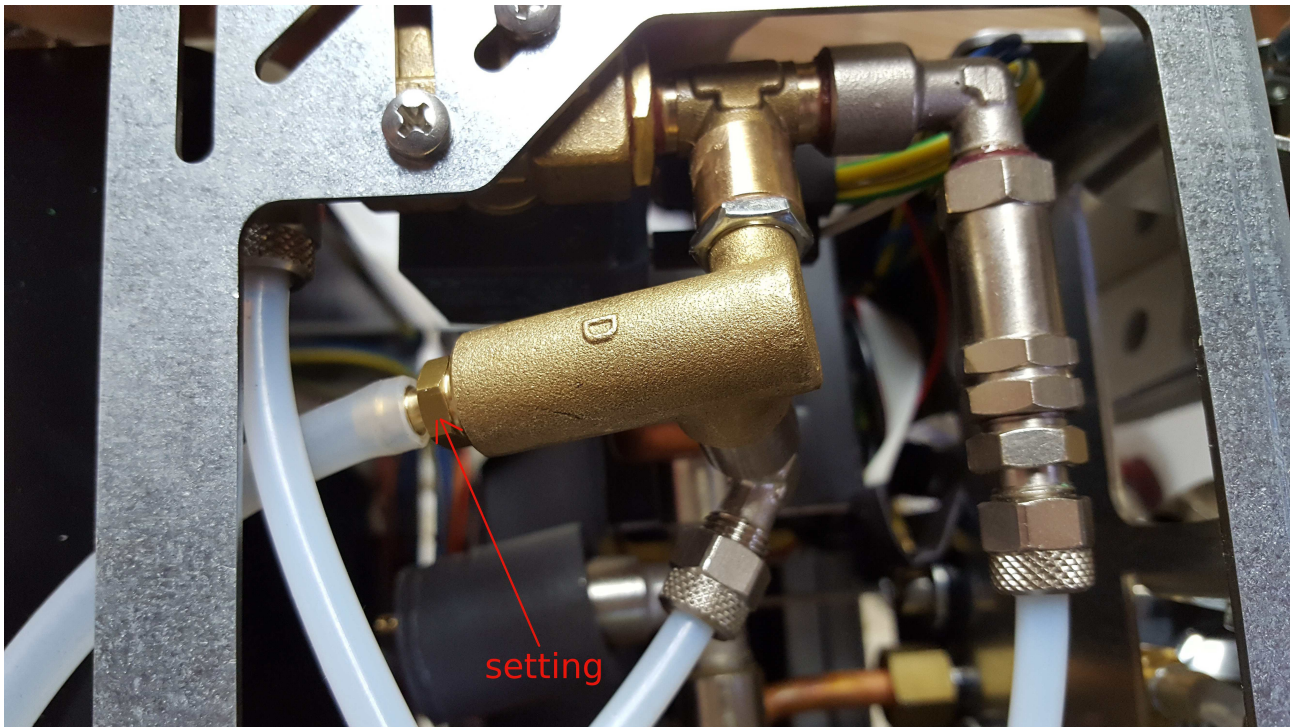
Once this has been done you just have to adjust the OPV valve
It is preferable to make the adjustment when the machine is hot
Screw the manometer on the filter holder, **DO NOT ENTER ANY FILTER**



Press the button to dispense coffee, the manometer will read an X pressure
To **DECREASE** the pressure unscrew anticlockwise the adjustment screw of the OPV valve

To **INCREASE** the pressure screw clockwise the adjustment screw of the OPV valve

It is important to empty the filter holder between a regulation and the subsequent one



Elektro's di Bonfigli Gianni is not responsible for damage resulting from the installation, it is your responsibility to carefully follow every step so that the installation is in total electrical and hydraulic safety.

The user is aware that the installation could void the warranty given by the manufacturer.